

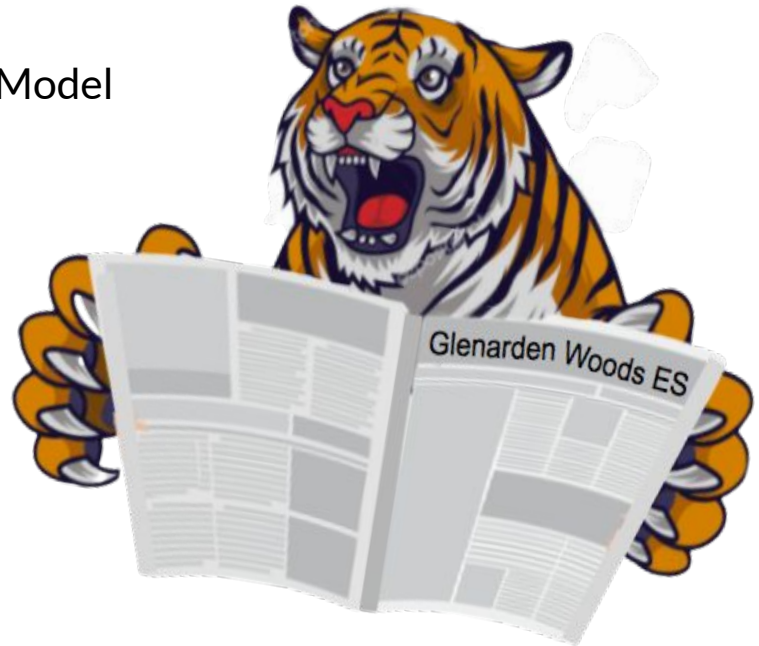
Tiger Tribune



Volume 3, Issue 11 • September 1, 2022

Inside This Edition

- Principal's Message
- TAG Best Practice: Paul's Reasoning Model
- Tech Tigers Updates
- Counselor's Corner
- Testing Updates
- Grade Level
- Character Trait of the Month
- Specialist News
- School Psych Corner
- Important Information
- GWES PTA News
- FAQs
- September At-A-Glance



Principal's Message

Welcome back to the start of another school year!! If you are a returning family, welcome back to the "happiest place on earth!" If you are a new family who received a "golden ticket" to our school, welcome home. New or old, we welcome one and all as one Glenarden Woods family. You have chosen well. Thank you, in advance, for supporting our school. It is a very special place.

Our instructional days have already gotten off to a great start, with children engaged in meaningful learning from day one! Thank you to our children who are working and learning like champions every day! Thank you parents for your patience with our buses. We are still working with Transportation on the afternoon bus schedule. School wide, the on time performance of almost every bus has improved with each passing day. We believe that it will continue to improve. Thank you to all of the parents who drop off their children in the morning and pick them up in the afternoon. Many thanks!





TAG Best Practice

William and Mary Teaching Models Paul's Elements of Reasoning Model

As mentioned in the June newsletter, part of our accelerated approach to teaching our gifted students is utilizing the William and Mary College Integrated Curriculum Model. Within the William & Mary curriculum units, specific teaching models are used to strengthen students' critical thinking skills within the context of a particular unit of study. Each of the models is flexible and may be adapted to a focus of study. ***For the month of September, we will focus on Paul's Elements of Reasoning.***

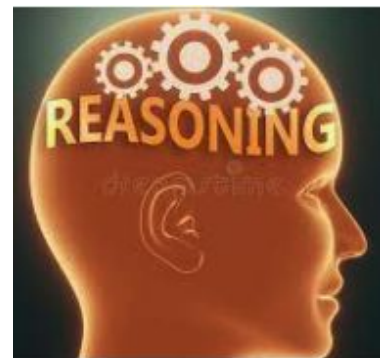
Paul's (1992) Elements of Reasoning

Paul's (1992) Elements of Reasoning is a model for critical thinking and emphasizes the following eight elements: issue, purpose, point of view, assumptions, concepts, evidence, inferences, and implications or consequences.

Teachers may introduce these terms to students, using a familiar issue such as something being discussed in the school or community; teachers should then encourage the use of the terms and the model in approaching problems and issues.

[Reasoning Web](#)

[Reasoning Questions](#)



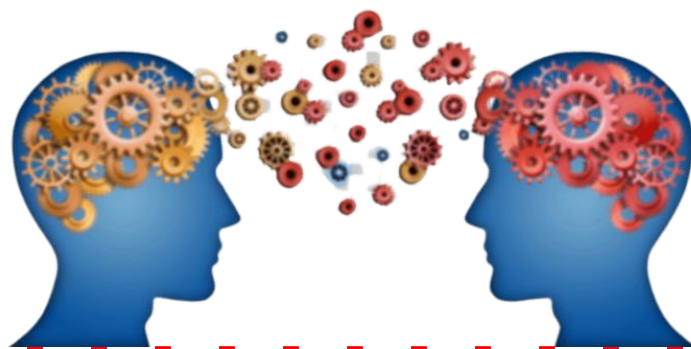
Reasoning About a Situation or Event

Based on the elements and premise of the Paul model, this reasoning model should be used when analyzing a specific event where two or more people or groups of people conflict with one another and have a vested interest in the outcome of the event.

[Reasoning About a Situation or Event](#)

Source:

<https://education.wm.edu/centers/cfge/curriculum/teachingmodels/>



Tech Tigers Updates



During the first month of school in all Technology Classes, the students will be memorizing their login and passwords, and learning about Digital Citizenship in order to be a Good Global Citizen. Students will work to recognize the rights, responsibilities and opportunities of living, learning and working in an interconnected digital world, and they act and model in ways that are safe, legal and ethical. Students will cultivate and manage their digital identity and reputation and are aware of the permanence of their actions in the digital world. Students will engage in positive, safe, legal and ethical behavior when using technology, including social interactions online or when using networked devices.



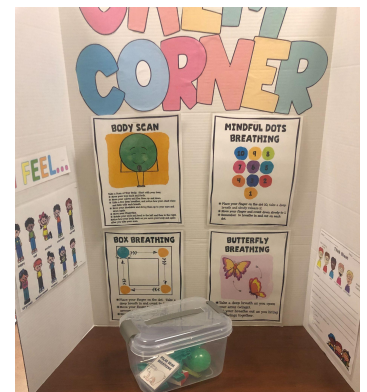
Welcome GWES family!

I hope you all had a wonderful break and are ready to have an awesome school year. This school year it is my goal to strengthen our Social Emotional Learning (SEL) program by incorporating more time in the classrooms, and providing each room with a calm corner for all students to use when needed. I am also asking you to fill out a [Parent Needs Assessment](#) so that I am able to get your input on how to make our counseling program successful. We are also in the process of establishing parent workshops; Parents Achieving with Students (PAWS). Please keep a lookout for more information.



Counselor's Corner

Ms. Romero
ana.romero@pgcps.org



Testing Updates



September 2022 Upcoming Tests

Test Name	Grades	Dates Administered (Subject to Change at Anytime)
I-Ready (RELA)	Grades 2-5	September 12th - October 3rd, 2022
Dibels 8 (RELA)	Grade 2 Only	September 26th - October 19, 2022



Spring 2022

MCAP Grades 3-5 ELA and Mathematics Anticipated Date for Score Results

- ❖ According to the information provided by the (MSDE), student results with scale scores and performance levels from the SY22 administration of both ELA and Mathematics **will not be available until the end of the calendar year (December 2022).**
- ❖ The reporting timeline was extended due to **rangefinding and standard setting activities that still need to be conducted on the Spring 2022 administration's data.**
- ❖ **MISA Grades 5:** MISA Individual Student Reports (ISRs) will be sent to schools for distribution to parents and families in **September 2022.**





Grade Level Updates



2nd GRADE

[Team 2 Sept Newsletter 2022.pdf](#)

3rd GRADE

[Team 3 Sept Newsletter 2022.pdf](#)

4th GRADE

[Team 4 Sept. 2022 Newsletter.pdf](#)

5th GRADE

[Team 5 Sept Newsletter 2022.pdf](#)



Character Trait of the Month: Responsibility!

Learning Goal:

Students learn to work with others, gain skills needed to organize and complete a task, and to take responsibility for their choices and their impact on the world.

Success Criteria:

- *I can show responsibility by cleaning up after myself.*
 - Examples: I can make sure I put all of my trash in the trash can. I can keep my desk clean and organized. I can put all materials back into the proper center so they are ready for the next student.
- *I can show responsibility by accepting the consequences of my actions.*
 - Examples: I can apologize if I bump into someone because I chose not to move safely. I can accept having to buy lunch if I forgot to bring my lunch box.
- *I can show responsibility by doing the things I am expected to do.*
 - Examples: I can turn in my homework to the proper location. I can follow classroom expectations without being reminded. I can accomplish my classroom job in a timely manner. I can complete my assigned tasks when we work as a group.

Supporting Traits:

Honesty, respect, fairness, accountability, courage, self-discipline.

Specialist Updates



General Music

- Ms. L. Brown and Ms. R. Parker



During September, students will review classroom rules and expectations. They will listen to instrumental music, learn songs and speech pieces, and participate in activities that will enhance their knowledge of Beat, Meter, and Rhythm.

PHYSICAL EDUCATION



- With Mr. Asbury

It is such a pleasure to welcome all the wonderful students back to school this year. I look forward to getting to know your children and having them in PE this year. Each class will have 60 minutes of PE per week in Grades 2-5.

The goal of Elementary Physical Education at GWES is to teach students to develop healthy living habits that will last a lifetime. I accomplish that by having students participate in a wide variety of activities, sports, and challenges that will increase their physical, social, and mental abilities, as well as teamwork and cooperation skills. I hope to provide a safe, fun, and motivating class that will encourage all students to want to participate, have fun and try their best. This year I will be incorporating the OPEN module lessons, First TEE Golf, and SEL reinforcement.

September Lessons include Building Community and Teamwork.



-With Ms. Lipczenko

In the month of September all grade levels will be creating sketchbooks and portfolios.

ICAL with Ms. Hancock

Grade 5 ICAL- Spanish

During the first quarter, the fifth graders begin their Spanish ICAL unit. Students will expand Spanish vocabulary in order to greet and introduce themselves in Spanish, describe classes and their school day, and discuss themselves and their families.



I hope everyone had a restful summer and you are ready to get back to school. I am Dr. Alex Lagrimas your library media specialist.

In our library orientation this week. I will discuss the following topics:

1. Library Rules and Procedures
2. Dewey Decimal Classification System
3. Using The Destiny Catalog
4. PGCPs Library Resources
5. Coding



Specialist Updates



ICAL with Mr. Kapili

Grade 2 ICAL-- Konnichiwa Nippon!!!

Students will be oriented about the Japanese ICAL activity packet. They will have a tour across Japan and to visit the capital city, Tokyo. They should fill up the K.W.L. chart, study the map of Japan, the flag of Japan and learn some basic Japanese greetings. Moreover, the students will be able to find out why Japanese is a polite language.

Grade 3 Chinese ICAL-- Nihao! Nihao!

Our Grade 3 students will be introduced to the world of Chinese culture and language basic skills; listening, speaking, reading, and writing. Basic communication is the foremost aim. Students will have a bird's eye view of China-- a glimpse of its various facets of culture, language, brief history and traditions. They will do map study of China and do map activities.

Grade 4 Spanish ICAL-- Hola Mexico !!

The cover alone of the Grade 4 Spanish ICAL Student Packet provides already a rich tapestry of what the unit about Mexico can offer e.g. coco, maracas, sombrero, pajarito, toro, guitarra, pinata, etc. Hay muchas cosas a aprender! They will be embarking on a new adventure, learning about Mexico, one of the many countries in the world where Spanish is spoken plus the opportunity to experience the language and culture in the classroom, activities to complete, vocabulary to learn, songs to sing, and a lot more.
Aprendamos y disfrutemos!!!!

School Psych Corner



Welcome to the 2022-2023 school year!

I hope that you and your family were able to spend some time outdoors enjoying the many wonders of nature. I am

Dr. Jacquelyn Gordon, your School Psychologist, and I have been a school psychologist for 23 years. I am the proud mother of two sons, and I enjoy reading mystery novels and taking walks with my three-year old Master Curry dog, Redd.

A new school year can create a range of emotions from excitement to anxiety about all the new things that a new year brings—new friends, new teachers, new routines and expectations, new skills to be learned. Understanding and managing these different emotions are all part of your children’s ability to self-regulate, a key skill in their social and emotional development. Self-regulation can be defined as “the act of managing thoughts and feelings to enable goal-directed actions,” and includes a variety of behaviors necessary for success in school, relationships, and future career development. Each month, we will share with you different ways in which you as a family can continue to build your child’s self-regulation skills. We will also share with you how adult caregivers shape and support self-regulation development through an interactive process of “co-regulation.”

Does your child need a little support with those back to school feelings of anxiety or worry, here is a [Link](#) to a fun craft activity that you may work on together as part of the co-regulation experience.



Hello all!

My name is Ms. Barclay. I am Dr. Gordon’s school psychology intern for the 2022-2023 school year. I am coming from Bowie State University. I was born and raised in Prince George’s County. If anyone would like to speak French with me, please do not be shy! I grew up learning French since Kindergarten and I love the language.

Fortunately, I have Dr. Gordon as my supervisor this year. She is an expert at many things but her knowledge in Social-Emotional Learning is invaluable as we deal with the mental/emotional effects of the pandemic. I am excited to be at such a wonderful school with supportive parents and teachers who truly care about the students. I look forward to serving the students and providing the supports necessary so that they can be their best selves.

GWES PTA News

Hello GWES Families,

Welcome to the GWES PTA for the 2022-2023 school year! It is almost the First Day of School! **We are super excited to build a community with all of you! Please complete our survey!** [Glenarden Woods ES PTA Membership Survey \(SY 22-23\)](#)

Before we begin, let us formally introduce you to the GWES PTA Board:



- President - Heather McAndrews (mom of a fourth grader)
- Vice President - Riziki House-Okon (mom of a third grader)
- Co-Secretary - Cynthia Stafford (mom of a third grader)
- Co-Secretary - Jennelle Davis (mom of a third grader)
- Treasurer - Brittney Moore (mom of a fourth grader)
- Book fair Committee Chair – Veronica Urquilla (mom of a fourth grader)
- GWES Community Connection Chair - Nadia Tyme (mom of a third and fifth grader.)

In order to make this year a success, we need your help! As we kick this year off with lots of Tiger Pride, we encourage you to do these **9 things first**:

1. **Join the PTA!** Stay connected and involved. Use this link to fill out the membership survey here: [Glenarden Woods ES PTA Membership Survey \(SY 22-23\)](#). Send all membership payments via Zelle to pta.gwes@gmail.com or cash to Mrs. Soto in a secured envelope with your name and email address.
2. **Join your grade level chat group!** Take advantage of meeting other families and participating in grade level meetups.
[Second Grade](#) [Third Grade](#) [Fourth Grade](#) [Fifth Grade](#)
3. **Check out the [GWES BOOK Fair Website](#).** Set up your child's ewallet, sign up to volunteer, or get a sneak peek of the books!
4. **Mark your calendars for back to school night!!**
September 20 – **Back to School Night @ 6:30pm (2ND/3RD GRADE)**
September 21 – **Back to School Night @ 6:30pm (4TH/5TH GRADE)**
5. **Remember to add lunch money in your students My School Bucks account for lunch [My School Bucks](#).** Only students who qualify for free and reduced lunch will be given free lunch this year. The "free lunch for all" model that was implemented last year, and the county will not continue this program this school year.
6. **Send your child to school with an extra mask!** The county will no longer provide the students with masks if they break! Maybe even send a box to your child's homeroom teacher! ***wink wink***
7. **Complete the PGCPs volunteer application and/or fingerprinting.** You can find all the information you need about by clicking here to begin or renew the volunteer process with PGCPs [Volunteer Application and Approval Process Information](#) or [Volunteer background check and fingerprinting process](#).
8. **Smile and add GWES PTA!** Are you an Amazon Prime member or do you make purchases via Amazon? When you shop at smile.amazon.com, you can designate "Glenarden Woods Elementary School PTA" as your charity of choice Amazon donates to GWES. Use this link to add our [GWES Amazon Smile](#) account.
9. **Pack your patience and be kind!** The first week of school will be a little hectic. Let's plan to extend a little grace to our students, staff, volunteers, and BUS DRIVERS!

Thank you in advance for your generous support! We plan to do all we can to make this a great year! If you need to reach us at any time, please email pta.gwes@gmail.com.

Wishing you well,
GWES PTA BOARD

Important Information

Glenarden Woods Elementary School

Welcome to the 2022-2023 School Year!

Back to School Nights

2nd and 3rd Grades- Tuesday, September 20th
4th and 5th Grades, Wednesday, September 21st.

Both evenings begin at 6:30 p.m.



Bus Transportation Issues



Transportation Resolution System

Application for Meal Eligibility

Meals are no longer free for all students this year. We encourage all families to complete the application as our funding is determined as a result of these forms.



Apply for Free and Reduced Priced Meals

Once eligibility has been determined, parents and guardians are encouraged to prepay for meals and snacks by depositing funds into their student accounts via online payment at [Myschoolbucks.com](https://myschoolbucks.com). FNS accepts cash, certified checks or money orders at the register. FNS does not accept personal checks.

Please contact the Food and Nutrition Service office (301-952-6580), if you have any questions.

Parent Resources Website

If you are having technology or digital problems, please check out this website for resources.



Parent Resources/Recursos para padres sobre el aprendizaje a distancia

Important Information

Car Rider Procedures

Please review the procedures and map to ensure the safety of our students.

- a. [Car Rider Procedures](#)
- b. [Map of Car Rider Line](#)

If you are new to GWES and are planning to be a car rider, please email Amanda.Soto@pgcps.org to request a car rider tag. Car rider tags **MUST BE** visible at pick up and are not needed at drop off.

Please be sure that you pull all the way down to the end of the red cones before stopping your vehicle to pick up your child.

Important Forms for Parent/Guardians

PGCPS Students Rights & Responsibilities - Student Handbook

[Student Rights and Responsibilities Handbook](#)

PR Release form

[2022-2023 STUDENT PUBLICITY RELEASE FORM](#)

SchoolMax Family Portal

Please make sure that your address and phone numbers are up to date in the Parent Portal.

To access the PGCPS SchoolMax Family Portal scan below. Our registrar can make corrections to your address as long as you show current proof of residency.

[SchoolMax Family Portal](#)

School Supply List By Grade

You can click below to see a school supply list for your child's grade.



<https://schools.pgcps.org/Glenarden-Woods/Supply-Lists/>

Frequently Asked Questions



Question

Answer

What is the earliest and latest my child can be dropped off at school?

8:45am - 9:15am
A reminder that there is no supervision for children prior to 8:45 a.m. every day. Please do not leave your child unattended.

What time is dismissal?

3:40 pm every day.

What is the latest my child can be picked up early from school?

3:15pm is the latest to make early dismissal pickups.

Where can I find the lunch menu for PGCPS?

<https://www.pgcps.org/offices/food-and-nutrition>

My student is having trouble with his/her PGCPS issued device. What should I do?

If your student is having trouble with his/her PGCPS issued device, please email Ms. Hancock for assistance. If the device is damaged, a money order or check made out to Glenarden Woods in the amount of \$30 will need to be submitted at the same time the device is returned in order to receive a replacement. If this is the second incident, you will be responsible for the full replacement cost, per the PGCPS Student User Agreement.

How can I see the wonderful things happening at GWES?



Check out the School Website! [GWES](#)
 Check out our TAG Center Website! [GWES TAG Center Website](#)
 Follow us on Twitter @GWES_PGCPS
 Follow us on Instagram [glenarden_woods_es](#)
 Follow us on Class Dojo! [Class Dojo Invitation](#)

How do I contact...

Principal:Mr. Baudoin- Baudoin@pgcps.org
 TAG Coordinator: Mrs. Soto- amanda.soto@pgcps.org
 ILT/Testing Coordinator: Ms. Gilroy -shannon.gilroy@pgcps.org
 Guidance Counselor: Ms. Romero- ana.romero@pgcps.org
 Technology Coordinator: Ms. Hancock - beth.stewarthancock@pgcps.org
 Registrar:Ms. Ball- gladys.ball@pgcps.org

September

At-A-Glance



September 5th
No School- Labor Day

September 15th
International Dot Day!

September 16th - 23rd
GWES Scholastic Book Fair

September 20th
Back to School Night @ 6:30pm (2nd/3rd Grades)
Back to School Night @ 6:30pm (4th/5th Grades)

September 29th
September Student of the Month Celebration: Responsibility

September 30th
No School for Students
Professional Development Day for Teachers

