

Tiger Tribune



Volume 3, Issue 14 • December 1, 2022



Inside This Edition

- Principal's Message
- Level Up with Technology Info (Register by Dec. 2nd)
- December Student of the Month: Compassion
- Theme Week Flyer
- TAG Best Practice
- Tech Tigers Updates
- Counselor's Corner
- Dig Into Data: Testing Updates
- School Psych Corner
- Grade Level Updates
- Notes from the Nurse
- Specialist Updates
- GWES PTA News
- TAG Middle School Parent Night
- FAQ
- December At-A-Glance



Follow us on Twitter @GWES_PGCPs
Follow us on Instagram @glenarden_woods_es

Principal's Message

It's hard to believe that December is upon us. Our school year is almost halfway over. We've had such great learning opportunities each and every day. We ask the children to work and learn like champions! A champion is someone who always does their best, always gives their all. That's what our GWES children are. Champions of Learning! This newsletter is filled with information about GWES happenings in the month of December. Please take the time to read about all that your child will be experiencing in the coming weeks. The holidays, of every tradition, are a joyous, wondrous time. Holiday traditions teach important lessons about family and connectedness. Whichever tradition your family celebrates, celebrate, celebrate, celebrate!! To you and to your family, may all the blessings that life has to offer be yours during this holiday season. All the best, Mr. B.



PGCPS Level Up with Code Virtual Family Event

Career and Technical Education (CTE) is providing an event for students and families on leveling up with code for students in Pre-K-6. It was a fun event last year and it is one your students won't want to miss this year!

When: Monday, December 5, 2022, from 6:00 pm to 7:00 pm.

See flyers below for more information...

EVENTS:
Scratch
code.org
Python
Scratch Jr.
+ more

LEVEL UP!
WITH CODE

MONDAY, 12/5/22, 6-7 PM
FAMILY NIGHT - FALL 2022
A FUN, FREE, VIRTUAL EVENT

Students in grades pre-K - 6+ will pair up with their parents or an adult in the home for a fun hour of coding!

no coding experience needed

REGISTER HERE by
FRIDAY 12/2/22
<https://bit.ly/PGCPSlevelup22>

EVENTOS:
Scratch
code.org
Python
Scratch Jr.
y más

¡AVANZA!
CON LA
PROGRAMACIÓN

Lunes, 12/5/2022,
6:00 p. m. a 7:00 p. m.
Noche Familiar - Otoño de 2022

Un evento virtual gratuito
¡Los estudiantes de prekindergarten a 6.º grado o más, trabajarán con sus padres o un adulto en casa para participar en una hora divertida de programación!

¡No se necesita experiencia en programación!

INSCRIBASE AQUÍ antes del
VIERNES, 12/2/2022

<https://bit.ly/PGCPSlevelup22>

Register here by **12/2/22.**
[PGCPS LevelUp Registration 2022](https://bit.ly/PGCPSlevelup22)



ÉVÈNEMENTS :
Scratch
code.org
Python
Scratch Jr.
et plus encore !

**PASSEZ AU NIVEAU
SUPÉRIEUR !**
AVEC LE
CODAGE

Lundi 5/12/22 de 18 H - 19 H
Soirée familiale - Automne 2022
Un événement virtuel amusant et gratuit

Les élèves de la prématernelle 6e année et plus seront jumelés avec leurs parents ou un adulte de la maison pour une heure amusante de codage !
aucune expérience de codage n'est nécessaire

INSCRIVEZ-VOUS ICI avant le
VENDREDI 2/12/22

<https://bit.ly/PGCPSlevelup22>

December Student of the Month

Compassion

Learning Goal:

Students are able to identify situations and emotions that indicate the need to show compassion.

- Compassion is when you **SEE** someone in need, **CARE** about their feelings, and **DO** something to show that you care.

Success Criteria:

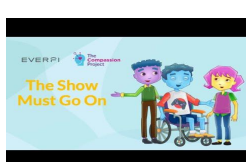
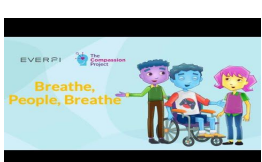
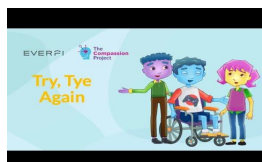
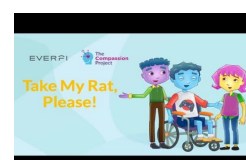
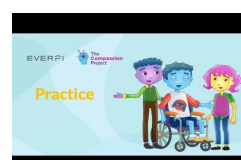
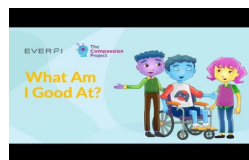
- *I can be compassionate towards all students and adults in my school, when I see them in need.*
 - Examples: After seeing a student crying because they are new to the school, I can offer for them to hang out with me during recess or after school.
- *I can be compassionate by being kind to others.*
 - Examples: I can invite the new student to sit next to me during lunch time.
- *I can be compassionate by saying nice words to others who are feeling sad.*
 - Examples: I can say “Good job”, or “I’ll sit with you”.
- *I can be compassionate by sharing and giving to others.*
 - Examples: Sharing your crayons or pencils with a classmate who doesn’t have school supplies.
- *I can be compassionate by using nice words and actions to encourage others.*
 - Examples: I can pat a friend on the back, say “You can do it.” or “Keep trying.” to others who need motivation.

Supporting Traits:

Kindness, Fairness, Empathy.

Check out some of these videos with your children to learn more about compassion:

The Compassion Project Student Videos



December 19th - 22nd

Monday, December 19th
Baby, It's Cold Outside!



Wear your favorite cold weather attire-
Cozy sweats, hats, and fluffy socks.

Tuesday, December 20th
Long Winter Nights!



Students will be allowed to wear
comfy pajamas to school today.

*Please make sure they are appropriate
for school.

Wednesday, December 21st

Second Annual Glenarden Woods Elementary School

WHITE OUT

Wear your best **WHITE** outfit
to celebrate Winter Solstice- The
First Day of Winter!
Wednesday, December 21st!

We will be learning about
all things winter, snow, ice
and, of course, the
shortest day of the year!



Thursday, December 22nd
UGLY SWEATER Day!

Impress your classmates with your
favorite ugly sweater!





TAG Best Practice

Socratic Circles/Seminars

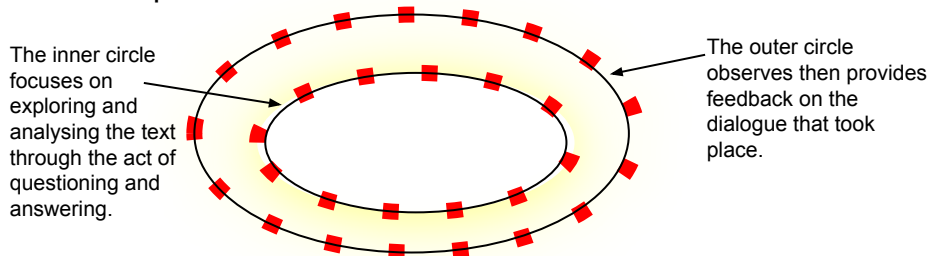
A Socratic Circle (also known as a Socratic Seminar) is an approach to understand and examine a text through questions and answers founded on the belief that all thinking comes from asking questions, and that asking one question should lead to asking further questions. The Socratic method of teaching is based on Socrates' theory that it is more important to enable students to think for themselves than to merely fill their heads with "right" answers.

It is important to note that Socratic Circle is not a debate. The goal is to have participants work together to construct meaning and arrive at an answer, not for one student or one group to "win the argument". This approach is based on the belief that students gain a deeper understanding of concepts through thoughtful dialogue rather than memorizing information.

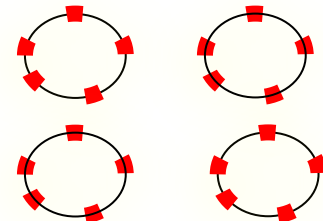
Socratic Circles involve the following process:

- A passage of text that students must read beforehand and two concentric circles of students: an outer circle and an inner circle.
- The inner circle focuses on exploring and analysing the text through the act of questioning and answering.
- During this phase, the outer circle remains silent. Students in the outer circle are much like scientific observers watching and listening to the conversation of the inner circle.
- When the text has been fully discussed and the inner circle is finished talking, the outer circle provides feedback on the dialogue that took place.
- This process alternates with the inner circle students going to the outer circle for the next meeting and vice versa. The length of this process varies depending on the text used for the discussion.

The most significant difference between this activity and most typical classroom activities involves the role of the teacher. **In Socratic Circles the students lead the discussion and questioning.** The teacher's role is to ensure the discussion advances regardless of the particular direction the discussion takes. Teachers use Socratic Circles in different ways. The structure it takes may look different in each classroom. Nonetheless, our GWES teachers utilize our Symposium Lab and our desks on wheels to spread out and easily practice this rewarding strategy. After all, we want our talented and gifted students to be inquisitive critical thinkers and develop leadership skills. This is why socratic circles are a TAG best practice!



Whole Class Socratic Circle



Small Group Socratic Circles

Allows more in-depth discussions. Each group can discuss a different text, or students can discuss the same text. With different texts, students can discuss how the books were interrelated. With the same text, students can discuss how the story was interpreted differently.

Resource: [Socratic Circles/Seminars - SELspace](https://www.selspace.com/socratic-circles-seminars).

Tech Tigers Updates



In Technology, students will continue completing activities using Google Apps for Education. We are graphing the outcome of our survey data using Google Sheets. We also will transition into coding, using C.S. first, by Google and Scratch to code our activities. I encourage you to ask your child to share their technology projects, their digital stories, Pixel Art, and Data Displays.

As a school, we are working to balance technology usage, and make the technology activities meaningful and engaging. "Research suggests that at least 64% of people now spend up to 4 hours daily of leisure time in front of a screen. Just as TV watching has been linked to higher rates of obesity and diabetes, this extra sedentary time is bad news for our health.", [Readers Digest Article](#). Students use technology daily in school, and often portions of their homework involve technology, at home. It may be helpful and/or necessary for you to step in and limit their screen usage. **Click here to read the article - [How and When to Limit Kids' Tech Use](#)**

Students work with technology at times, and without using technology. Some lessons are a mixture of tech and "old school". Nevertheless, it is important that your student have a working chromebook in school every day. Please make sure it is fully charged and ready for school the next day. Chromebooks must be taken home daily, in case of unexpected school closure or virtual learning is taking place.

"No one cares more about your child's well-being and success than you do. In today's digitally-fueled times, that means guiding them not just in the real world but in the always-on virtual one as well. Teach your children to use technology in a healthy way and pick up the skills and habits that will make them successful digital citizens."



Happy Holidays!

For the month of December, our theme we will be "Celebrating Diversity and Traditions" while we incorporate the character trait *Compassion*, our word for the Student of the Month.

December Tip:

"Micro-Rewards" For Kids struggling with completing homework.

Build in breaks or "rewards" in between tasks will help them and you get through the assignments. This increases engagement and sends positive thoughts to the brain.

Example:

15 minute Homework, 5 minutes game of Uno.
Repeat as needed.

Suggested Strategy:

Make a list of 2 or 5 Minutes "Rewards" with your child. You can write them down or draw them, cut them out and put them in a "choosing jar." Each night before homework they can choose what 2 (or 5) minutes breaks they like to use.



Counselor's Corner





Dig into Data!

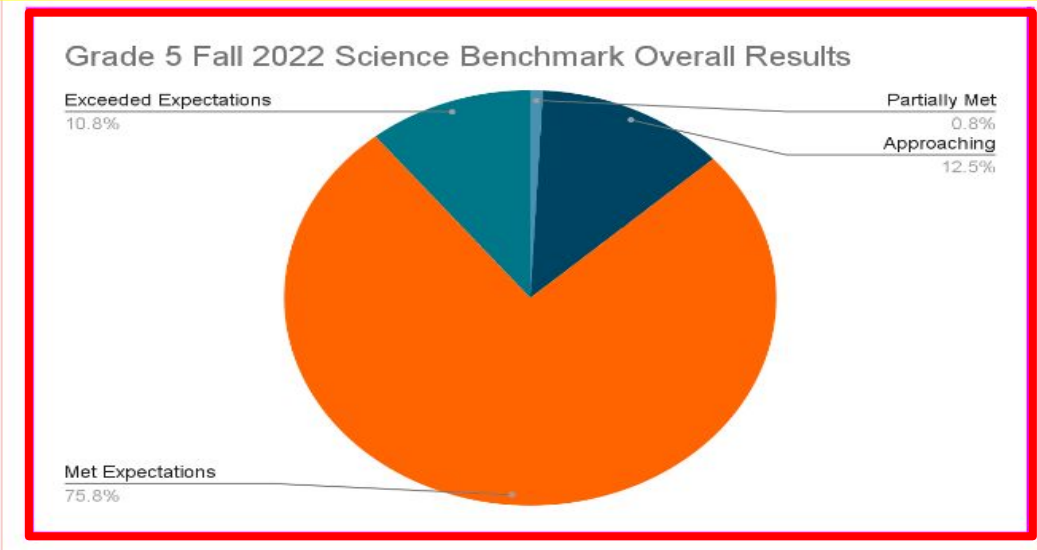
Fall 2022 Reading, Math, and Science Benchmarks

Performance Level Scale

0-19% Performance Level 1: Below Expectations
61-100% Performance Level 3: Met Expectations

20-60% Performance Level 2: Approaching Expectations

| Search in Grades | ELA | Math |
|--|-----------------|-----------------|
| PRINCE GEORGE'S COUNTY PUBLIC SCHOOLS | 20% 55% 25% | 43% 47% 10% |
| AREA 1 | 26% 53% 21% | 30% 54% 16% |
| CLUSTER 02 | 18% 51% 31% | 20% 54% 26% |
| GLENARDEN WOODS ELEMENTARY ❤️🐅❤️ | 0% 29% 71% | >0% 28% 72% |



The Fall 2022 Reading, Math, and Science County Benchmarks were administered in November 2022. Grades 2-5 students took the Math assessment. Grades 3-5 students took the Reading (ELA) assessment. Grade 5 students took the Science Benchmark.

The purpose of these assessments is to measure what your child learned during the first quarter. The data gained from the Benchmarks supports teachers with identifying instructional strategies and resources to meet the needs of each student.

We are very proud of our GWES Tigers! As you can see from our data, students worked like champions! Please feel free to contact you child's teacher(s) or the School Testing Coordinator to learn specifically how your child did on the assessment(s).



Dig into Data!

Fall 2022 I-Ready

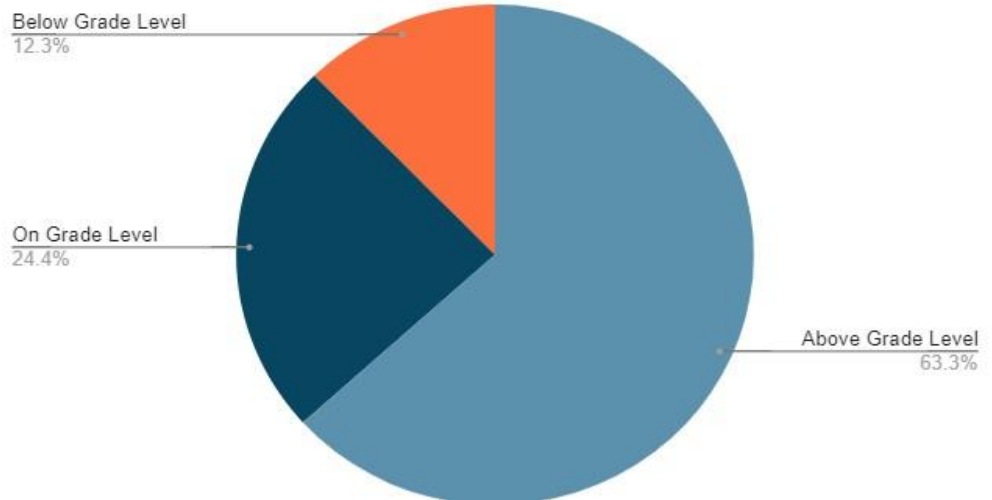
The I-Ready Diagnostic Assessment was given to Grades 2-5 students in Reading/ Language Arts classes in September. This assessment is considered a pre-assessment to establish a student's reading level. Students will be given this assessment in the Winter 2023 and Spring 2023 to measure their growth over the course of the school year. The data below shows the I-Ready Fall 2022 Data for our GWES students.

Above Grade Level =
Student scored above where they are to be (Mid Above Grade Level or Above Grade Level).

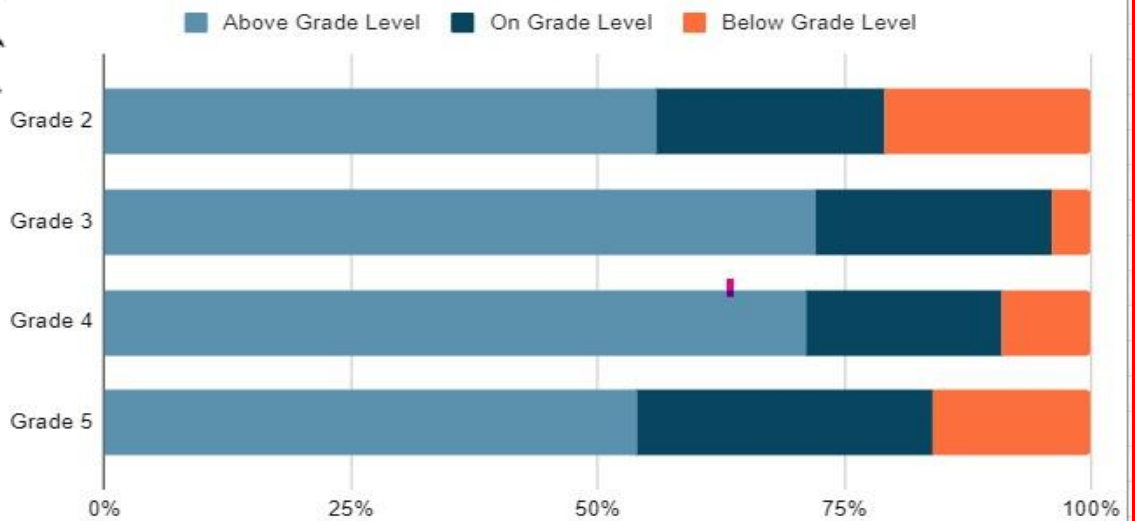
On Grade Level =
Student scored exactly where they are to be (Early On Grade Level).

Below Grade Level =
Student scored at least one or more grade level below their current grade.

Overall GWES Fall 2022 I-Ready Data (Grades 2-5)



Overall GWES Fall 2022 I-Ready Data (Grades 2-5)



*** To find out more and to understand I-Ready, please download the [I-Ready Family Guide](#). Also reach out to your child's RELA teacher and/or the School Testing Coordinator to find out specifically how your child performed on the Fall 2022 assessment.

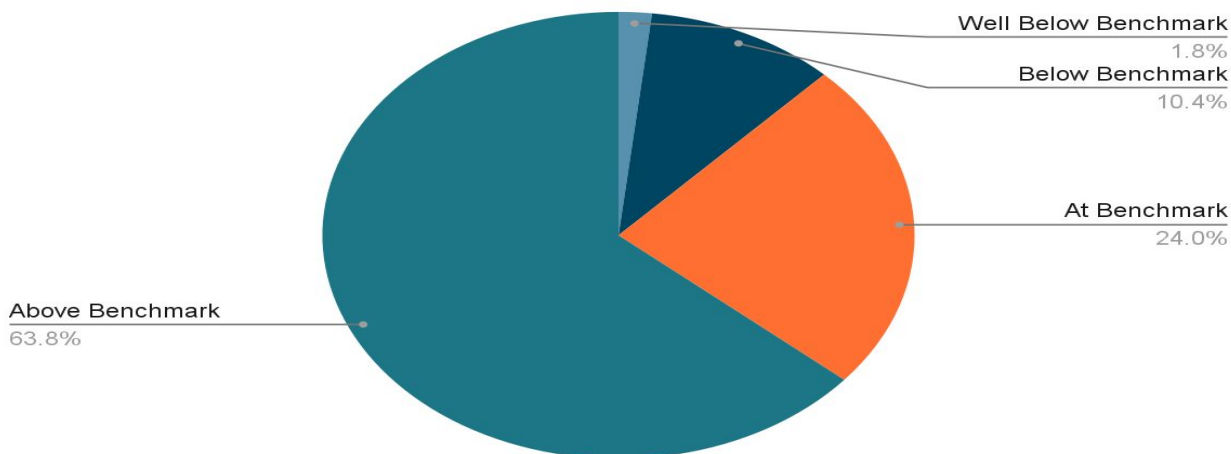
*** Students should be spending at minimum 45 minutes on I-Ready every week.



Dig into Data!

DIBELS Fall Administration: Grades 2 and 3

Overall Grade 2 &3 Fall 2022 Dibels 8th Edition Composite Scores



The Dibels 8th Edition Assessment was given to all Grades 2-3 students in Reading/Language Arts classes in September 2022. Dibels stands for Dynamic Indicators of Early Literacy Skills. It is given 3 times a year (Fall, Winter, and Spring) to monitor reading growth over time. This assessment consists of multiple subtests that measures and determines how students are performing on foundational early literacy skills. The composite score is a combination of multiple DIBELS subtest scores and provides the best overall estimate of the student's early literacy skills and/or reading proficiency. **The beginning of year benchmark goal for a 2nd grader is 329 and for a 3rd grader is 352.** Please refer to the Dibels score report that was sent home before Thanksgiving break in order to determine your child's composite score.

Each student was tested in the following areas:

- ❖ Letter Sounds
- ❖ Decoding
- ❖ Word Reading
- ❖ Reading Accuracy
- ❖ Reading Fluency
- ❖ Comprehension
- ❖ Phonological Processing



How will teachers use the data from this assessment?

Reading/Language Arts Teachers will use this data to plan small group instruction and monitor student progress with that instruction. In addition, students who tested **Well-Below** or **Below Benchmark** are to use the Lexia Core5 program instead of the I-Ready program to help close any possible skill gaps. Students will receive individual time usage targets within the *Lexia® Core5®* platform each week. In addition, the platform will identify when a teacher may need to intervene to provide the student(s) with small group instruction using *Lexia® Core5®* lesson plans.

To find out more and to understand Dibels, please download the [Parents Guide to Dibels Assessment](#). Also reach out to your child's RELA teacher and/or the School Testing Coordinator to find out specifically how your child performed on the Fall 2022 assessment.

School Psych Corner



Let Gratitude and Kindness Guide the Holiday Festivities!

Hi families! Can you imagine that December 2022 is here? So much has happened in our world and the lives of our children over the last two years! It is thus important that we strive to help our children see the true meaning of the holiday celebrations by cultivating their spirit of gratitude and kindness!

Shift the focus from Receiving to Giving!

Children often view holidays as a times of receiving; however, encourage your children to think of all the different ways that they can give to someone else. This is a great learning experience as through giving to others, children may realize how fortunate they are. Here is one idea - help your child design a special Holiday Shoebox for a child as a Holiday gift, where they may choose what kind of items to go inside!

Adopt Gratitude as a New Holiday Family Tradition!

Throughout this month, identify a specific time of day—before breakfast, at dinner time, or at bedtime—to establish a new family tradition of everyone saying at least 2-3 things that they are grateful for. Help children dig even deeper by identifying why they are grateful for these people or things and to think of how they life would be affected if they were gone!

Be a Great Model of Gratitude!

Our children learn so much from watching how we show up for others in this world! Whether it is in your work with a charitable organization or your simple interactions with the cashier in the store, continue to help your child to see gratitude reflected in your words, actions, and behavior. Don't forget to express "thanks" to your children too! This can be a powerful way of reflecting what gratitude looks like!

Here are some additional ways to express gratitude and kindness:

1. **Volunteering.** In our area, there are toy drives, food drives, and clothing drives where people can donate items and offer their time to facilitate the process.
2. Leave a **positive note** for a family member or a friend! Surprise them with a sticky note about how you appreciate them or something that they have done.
3. **Smile and say something nice** to somebody (and yourself)! "I'm glad you're here with me", "You brighten my day when you _____" and/or "I have been very _____ (e.g., helpful, positive, hardworking)".

We hope you all have a wonderful and joyous holiday season!

REMEMBER: Gratitude is a skill that allows our children to further build empathy, but also allows families to build stronger bonds!



Grade Level Updates

2nd GRADE

[Team 2 December Newsletter.pdf](#)

3rd GRADE

[Team 3 Newsletter Dec 2022.pdf](#)

4th GRADE

[Team 4 Dec 2022 Newsletter.pdf](#)

5th GRADE

[Team 5 Newsletter- Dec.pdf](#)



Notes from Nurse Ajayi!



Child Passenger Safety

Buckle Up Every Age, Every Seat, Every Trip



Always properly buckle children ages 12 and younger in the back seat.

Motor vehicle injuries are a leading cause of death among children in the United States, but many of these deaths can be prevented. Always buckling children in age- and size-appropriate car seats, booster seats, and seat belts reduces serious injuries and death by up to 80%.

To learn more, visit the CDC's article, [Child Passenger Safety | Transportation Safety | Injury Center | CDC](#).

Specialist Updates



-With
Dr. Bishop

Instrumental Music

Band and orchestra are now in full swing! The first year instrumentalists have all made their first sounds and are taking their first steps on their personal musical journey. Both the advance band and orchestra have shaken the summer rust off and are being exposed to new notes, new ways of playing old notes, and new pieces. Both groups are currently focused on intonation and good tone production.

PHYSICAL EDUCATION



With:

- Mr. Asbury
- Mr. Bowman

December Units

- Balance and Rhythm
- Components of Fitness (See of your child can name some- There are 11)
- Holiday Games

Help your students stay active at home!

Click on the links below to find some great activities

[December Fitness Calendar](#)

[Holiday Yoga](#)

[12 Days of Fitness](#)

[Elf on a Shelf Chase](#)



General Music

In the month of December, **2nd and 3rd graders** will continue to learn about instruments and learn about the Baroque, Classical, and Romantic Musical Periods.

- Ms. Parker

Grades 4th and 5th

During the month of December students will continue working on the concepts and skills started in previous months. They will listen to instrumental and vocal music, analyze, learn and sing winter/ holiday songs.

- Ms. L. Brown



Happy Holidays to
Parents/Guardians of ESOL
Scholars!

Please email me at s.robertscarson@pgcps.org AS SOON AS POSSIBLE if your child will be absent from school a week or longer due to travel plans out of the state/country in **January or February**. ALL K-12 ESOL students in the state of Maryland will be taking the *2023 Access for ELLs Assessment* during these months. Your child's school attendance will be extremely important during this testing window. Our specific testing dates will be sent to you all prior to Winter Break.

Thank you for your cooperation and for all that you continue to do for our ESOL Scholars!

Mrs. Carson

Glenarden Woods ESOL Itinerant



-With Dr. Lagrimas

[December - LMC.pdf](#)



With Ms. Lipczenko

Second grade students have been working on mixed media such as oil pastels and cut yarn.

Third grade students have been working on making birds and 3-D paper sculptures. 4th grade students have been working on Agamographs and Diamante poems. Finally, 5th grade has been working on Haikus. Check out our Art samples... [Art Samples .pdf](#)

Specialist Updates

ICAL with Mr. Kapili

Gr. 2 Japanese ICAL

Students are required to sing with confidence and correct pronunciation of a traditional Japanese folk song "Sakura" { Cherry Blossoms }. We continue to reinforce the Japanese counting numbers with the Go Fish Memory cards pairing numbers with Japanese words and vice-versa. The song, "Atama Kata Hiza Ashi" invigorates them with actions. Students will view videos and read about family life and schools in Japan. Then they will create a venn diagram to compare and contrast family life and schools in the United States and Japan. They will also learn, see, and experience the traditional Japanese clothing and dressing up in Japan.

Gr. 3 Chinese ICAL

We are reviewing the different Chinese inventions that have benefited the world! For example, toilet paper and toothbrushes are accredited to the Chinese culture. We viewed a video on The Great Wall of China. Students were able to grasp and appreciate the magnitude of the construction and the hardships of the people who labored. Students will make Chinese flags and know the important facts about the flag. Basic phrases in Chinese are practiced in every class meeting. Videos on the animals of China, the Chinese zodiac and the Chinese New Year will enhance further knowledge and information about the Chinese people and their cultural traditions and practices.

Gr. 4 Spanish ICAL

Students are counting in Spanish at least from one to fifty. The students can do this with ease by drill and exercise (e.g. connecting the dots from number 1 to 50). They can also sing " Uno, Dos, Tres Ninitos". We always practice the phrases in Spanish and do simple dialogues every time in the class (e.g. word puzzle etc). We are focusing on Mexico- facts and figures, fun facts, the flag of Mexico, reading about the Legend of the Eagle and the Serpent, the founding of its capital city and a brief cultural history, etc.

ICAL with Ms. Hancock

Fifth Grade ICAL:

Students will continue learning basic conversation phrases. We will participate in several virtual field trips for the month of December. We will also be learning about the holidays and celebrations of Spanish speaking countries, and exploring common and traditional recipes, such as:

Ensaladilla Rusa- A tasty tapa!

Many family Christmas spreads include an Ensaladilla Rusa as part of the tapas course. This cold potato and mayonnaise-based salad can be time-consuming to make from scratch, but well worth it. It's delicious and one of those dishes people expect to see over the holidays!





GWES PTA News



Welcome to December GWES Families!

Great things are happening at Glenarden Woods Elementary! We, as parents, play an important role and share in the memories made at GWES. Please mark your calendar for these upcoming events:

- We will be doing something special for Bus Driver Appreciation on **Friday, December 16th**. If you would like to be a part of that please email pta.gwes@gmail.com.

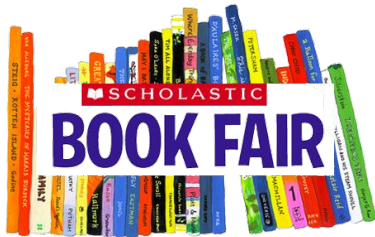
- The PTA will be hosting a Holiday Luncheon for teachers and staff on **Thursday, December 22nd**.



- Chipotle Fundraiser **Tuesday, January 10th, 4-9pm**.



Volunteers Needed!



We are looking for someone to co-chair the Scholastic Book Fair Committee in preparations for the Spring Book Fair. Please email pta.gwes@gmail.com if you are interested in the planning of the book fair.

Calling all GWES parents and guardians! We are starting the search for board members for next year! First up **Treasurer** - Do you have a knack for numbers, love dealing with money, want to have a hand in rewarding our awesome staff? Then this is the position for you. Let us know if you are interested in joining in the fun and email pta.gwes@gmail.com.



We will not be having a PTA meeting in December, but are looking forward to seeing you on **January 17th** when Mrs Soto will join us to talk about what it means to be TAG and how Glenarden Woods implements best practices for our students. Ms Romero will also be joining us to discuss bullying and how we can help prevent it.

The PTA would like to wish the GWES Teachers, Staff, and Parents/Guardians a Happy Holiday Season. **See you in the New Year!**

Heather McAndrews
PTA President



Save the Date!



TAG Middle School Parent Night

Attention GWES 5th Grade Families:
Join us on Zoom to learn more about the TAG Middle School Program. TAG coordinators from Greenbelt, Walker Mill, Benjamin Tasker, and Kenmoor Middle Schools will be in attendance.

Wednesday,
January 18, 2023
6:30pm - 7:30 pm

Please register in advance for this ..
[TAG Middle School Parent Night](#)

Agenda

- Welcome and Introductions
- TAG Program Overview
- *School Specific Information Session (Breakout Rooms)*



- Greenbelt Middle School, 301-513-5040

Ms. Thisse, TAG Coordinator Email: tracey.thisse@pgcps.org

- Kenmoor Middle School, 301-925-2300

Ms. Novick, TAG Coordinator Email: bnovick@pgcps.org

- Walker Mill Middle School, 301-808-4055

Ms. Gaujean, TAG Coordinator Email: nadine.gaujean@pgcps.org

- Benjamin Tasker Middle School, 301-805-2660

Ms. Janet Viana Clarke, TAG Coordinator Email: janet.clarke@pgcps.org

GWES Team:

Mrs. Amanda Soto, TAG Coordinator: amanda.soto@pgcps.org

Ms. Romero, School Counselor: ana.romero@pgcps.org

Ms. Belle, GWES School Registrar: ronta.belle@pgcps.org GWES: (301) 925-1300

Please locate which school your child is assigned to **HERE**.

It's important to know what middle school is in your boundary BEFORE the meeting.

Frequently Asked Questions



Question

Answer

When will clubs be starting at GWES?

ROAR Clubs will begin in the 2nd Quarter (January 9th.) Letters will be coming home soon!

R.O.A.R. means: **Responsibility, Opportunity, Academic, Rigor**

How can I receive communication about Glenarden Woods Elementary?



We have several ways!!!

1. Our School website!

<https://schools.pgcps.org/glenardenwoods/>

Our TAG Website!

<https://sites.google.com/pgcps.org/tagcenterprogram/home>

2. Our Monthly School Newsletter, "Tiger Tribune".

3. School Messenger - (Used by teachers and administration to deliver messages.)

4. Follow us on Twitter!!! @GWES_PGCPES
Even if you don't "do" Twitter, download the app and just follow OUR S



5. Follow us on Instagram!
Glenarden_woods_es

6. Follow our School Story on Class Dojo.
If your child's teacher doesn't use it, send Mrs. Soto an email and request the link to the school story.

How do I get GWES Swag?



Visit the PTA Website

<https://www.gwespta.org/#/>

Then visit the "School Store"

<https://www.gwespta.org/school-store.html#/>



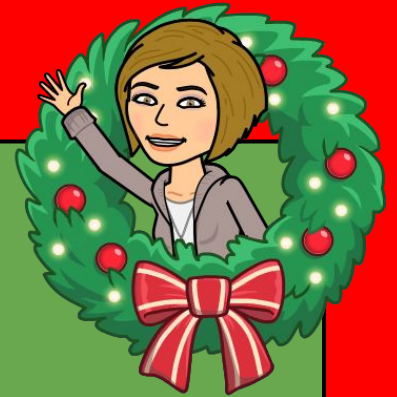


December

At-A-Glance



Wednesday, December 7th
Individual Picture Day



Thursday, December 8th
1st Quarter Honor Roll Assemblies
Second Grade: 10:00 am-11:00 am
Fourth Grade: 2:00 pm-3:00pm



Thursday, December 8th
1st Quarter Honor Roll Assemblies
Third Grade: 10:00 am-11:00 am
Fifth Grade: 2:00 pm-3:00pm



Monday, December 19th - Thursday, December 22nd

Winter Theme Week! See page 4 for details

Class parties; Reach out to your child's HR teacher for more details.

Friday, December 23rd- Monday, January 2nd

Winter Break- School Closed

🎉 School resumes on Tuesday, January 3rd, 2023! 🎉

Tuesday, January 17th
Virtual PTA Meeting @ 6:30 pm

